

**Aktion bis 30.3.2016**  
**um nur**  
**EUR 130,62 (netto)**  
**EUR 156,75 (inkl. Ust.)**

**haeconet**  
 Alarmanlagen - EDV  
 Elektro - Photovoltaik

**Der Würfel der  
 drucken kann!**

**SII**

Thermal Printer  
**POS Printer**

POS Printer

## RP-D10 Series



- Dual purpose : Paper top-exit and front-exit(IPx1)
- Compact cube : 129mm x 129mm x 129mm
- Max printing speed : 200mm/sec
- Energy saving : ENERGY STAR® compliant
- Paper saving : Receipt top space = 2mm(min.)
- Various drivers and wide variety utility software



RP-D10

Model		RP-D10
Printing	Method	Thermal line dot printing
	Resolution (dpi)	203 (8dots/mm)
	Paper width (mm)	80 <sup>1)</sup> / 58 <sup>1)</sup>
	Printing width (mm)	72 / 54
	Speed (mm/sec)max	200
	Outside diameter of paper roll (mm)max	φ83
	Inside diameter of paper roll (mm)	φ12
	Character matrix (H x W dots)	24 x 12, 24 x 24, 16 x 8, 16 x 16
	Character size (H x W mm)	3.0 x 1.5, 3.0 x 3.0, 2.0 x 1.0, 2.0 x 2.0
	Type of paper	Roll paper
Character type	Code page(14pages), Optional font, Downloaded character, User-defined character, JIS 1&2 Level Kanji, Special character	
Bar code	UPC-A/E, JAN(EAN)8/13, ITF, CODABAR, Code39, Code93, Code128, QR Code, PDF417	
Power supply (V)	Specified AC adapter, External power (DC24V±5%)	
Communication interface	USB, Serial, USB+Serial, Powered USB, Ethernet	
Input buffer	4k bytes	
Command	ESC/POS™ conformity, Markup Language	
Cutting	Methods	Slide type
	Cutting type	Full cut, Partial cut (Leave center point )
Operating Temperature (°C)		5 to 45
Service life	Abrasion resistance (km)	100*1
	Life (cut)	1,500,000*2
Dimensions (W x D x H mm)		129.0 x 129.0 x 129.0*3
Mass (g)		Approx. 850
Standard		FCC, CE, VCCI, RCM
Option		Wall mounting kit
Cash drawer		2 drivers (24V / 1A)
Body color		2 colors : White / Black
Driver		Windows® XP/Vista/7(32bit/64bit)/8(32bit/64bit), OPOS(XP/POSReady2009/7/POSReady7), POS for .Net (XP/POSReady2009/7(32bit/64bit)/POSReady7(32bit/64bit), Windows®(SDK), Linux(CUPS/SDK), Android™(SDK)*4

\*1 Use recommended thermal papers. \*2 Vary according to thermal paper \*3 Excluding protrusion \*4 USB only  
 ESC/POS™ : Registered trademark of SEIKO EPSON CORP. Windows® is the registered trademark of Microsoft Corporation (USA). Android™ is a trademark of Google Inc.

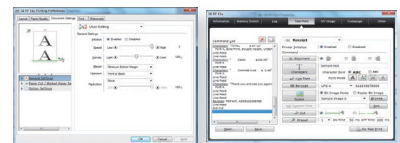
**Software tools** Convenient software tools available for assisting application development.

**Driver and utility software SDK:**  
 Status API, Devmode API (For Win32 API\*3 / .net API\*4)

\*3 \*4 The Windows® API, informally WinAPI, is Microsoft's core set of application programming interfaces (APIs) available in the Microsoft Windows® operating systems. The Win32 API is for Windows® operating system.

**Utility soft**  
 (Build on the Windows® driver)

- Memory SW setting,
- LOG management,
- USB serial ID setting,
- NV image registration,
- Code page registration



Specifications are subject to change without notice.

**SII**

**SEIKO**  
 SEIKO HOLDINGS GROUP

Impressum: HAECONET - Dipl.-Ing. Dr. Hager EDV- und Elektroinstallation, Alarmanlagen, Brandmeldeanlagen, Blitzschutz, Erdnungsanlagen, Beleuchtung, Elektroplanung und Beratung  
 Bürgerspitalgasse 8/9 1060 Wien und **Gadnerstrasse 31, 2500 Baden/Siegenfeld,**  
 ATU68639048, IBAN AT79 1420 0200 1202 1764